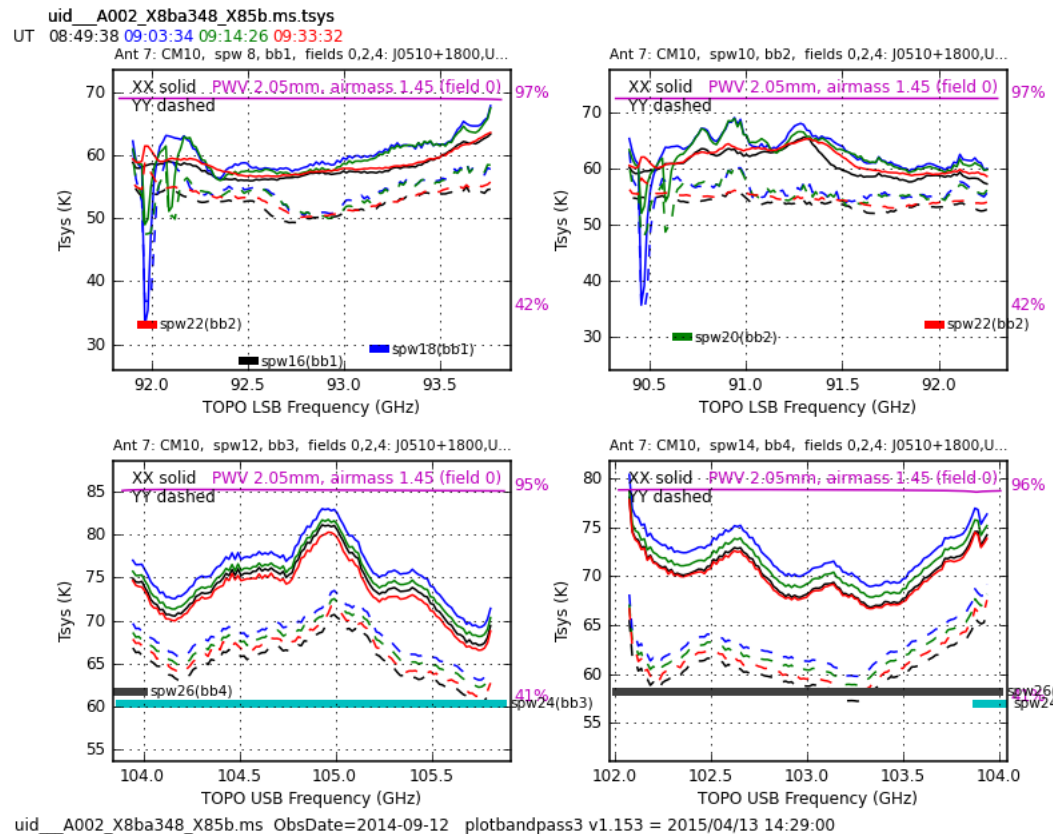
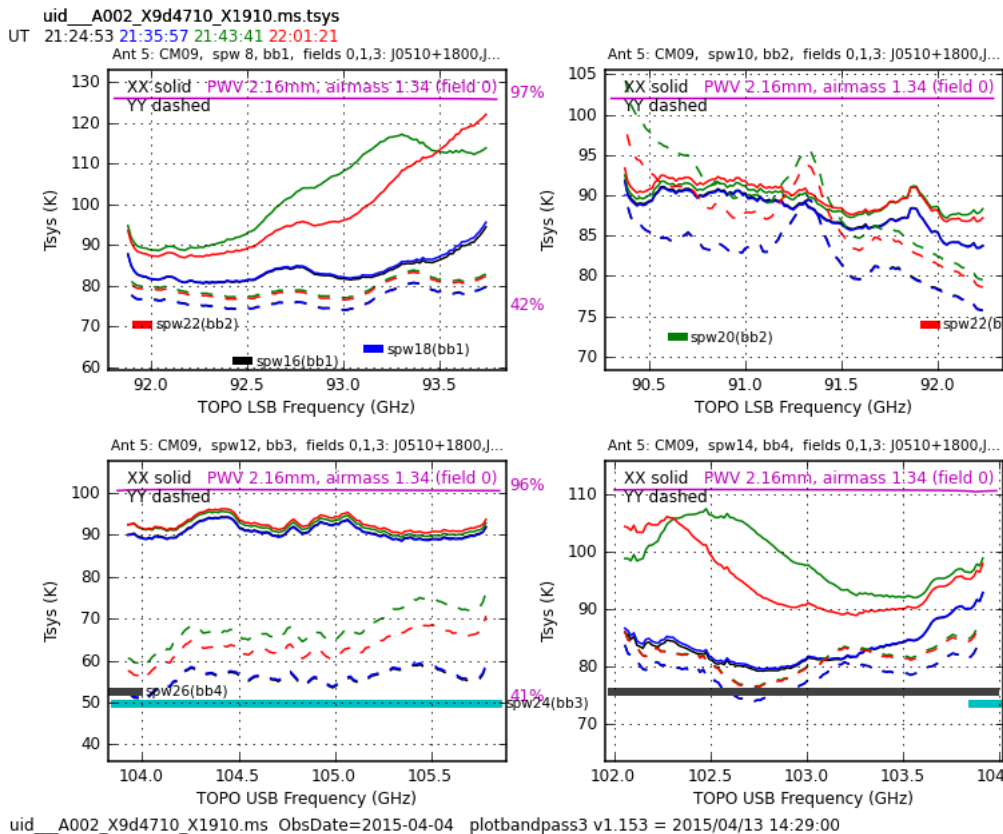


# Tsys shape issue

Tsys vs frequency shape changing between scans (CSV-1807)

Related to power levels set wrongly in the correlator in Tsys sky scans.  
Many details in ticket, so difficult to track... attenuators, digitalizers, etc.

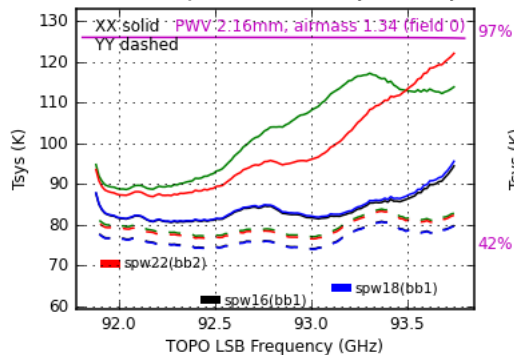


# Tsys shape

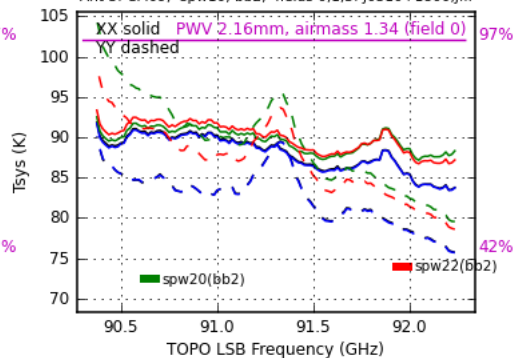
Tsys vs frequency shape changing between

Related to power levels set wrongly in the code  
Many details in ticket, so difficult to track.... a

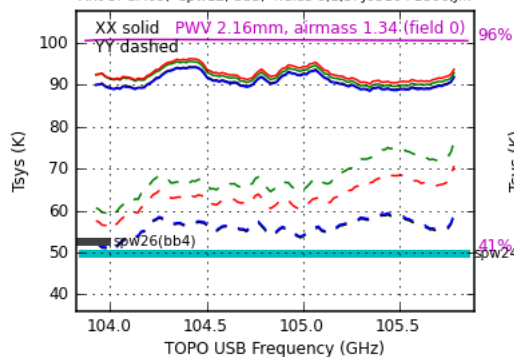
uid\_\_A002\_X9d4710\_X1910.ms.tsys  
UT 21:24:53 21:35:57 21:43:41 22:01:21  
Ant 5: CM09, spw 8, bb1, fields 0,1,3: J0510+1800,J...



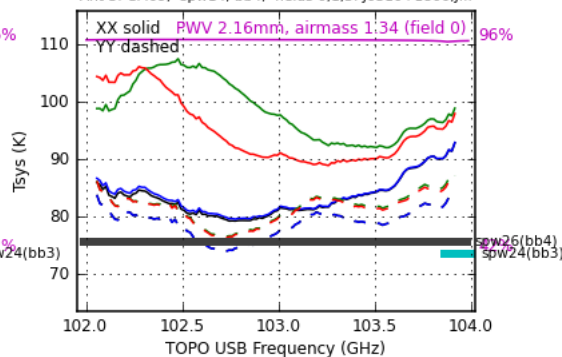
Ant 5: CM09, spw10, bb2, fields 0,1,3: J0510+1800,J...



Ant 5: CM09, spw12, bb3, fields 0,1,3: J0510+1800,J...

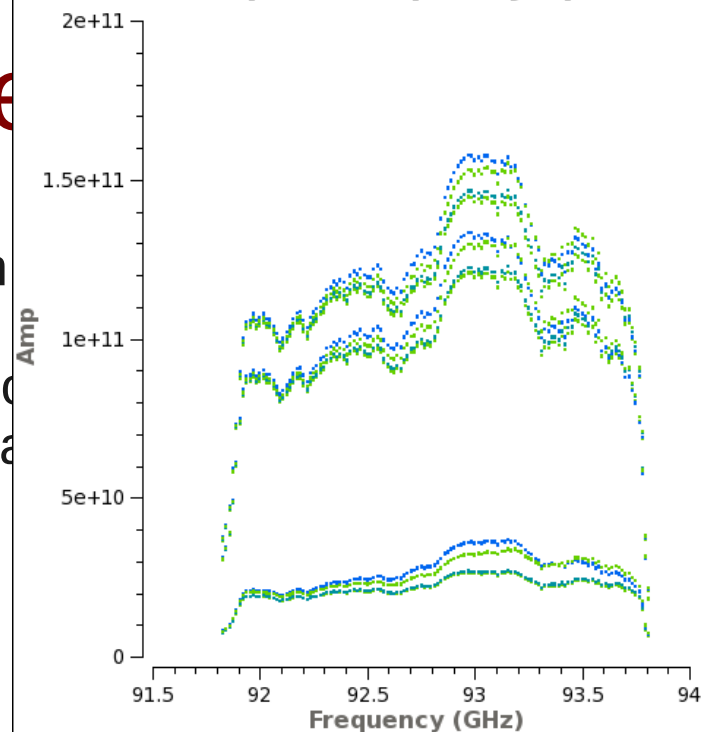


Ant 5: CM09, spw14, bb4, fields 0,1,3: J0510+1800,J...

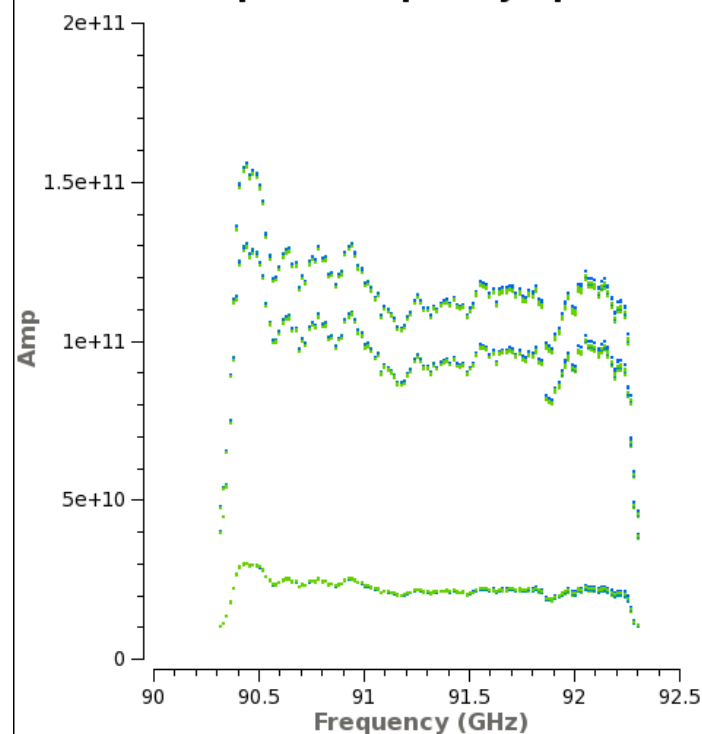


uid\_\_A002\_X9d4710\_X1910.ms ObsDate=2015-04-04 plotbandpass3 v1.153 = 2015/04/13 14:29:00

Amp vs. Frequency Spw: 8



Amp vs. Frequency Spw: 10



Then data (or tsys data) should be flagged.

Sometimes it is possible to recompute Tsys in telcal and solve the issue →  
post uids affected in CSV-1807 and they will do it at JAO, or ask Thomas/Dirk..